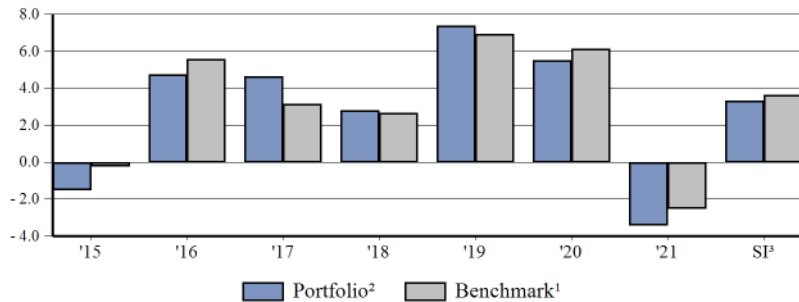


Colchester Global Government Bond Fund – Class N ISIN: AU60ETL04677

Monthly Report: October 2021

ESTABLISHED 1999	
CURRENT ASSETS OVER \$40BN	
VALUE ORIENTATED	
Global Bonds	Emerging Market Debt
Global Inflation	Alpha

GROSS PERFORMANCE AS AT END OF OCTOBER 2021



MARKET COMMENTARY

Global bond markets generated mildly negative returns in October, as expectations of monetary policy tightening were brought forward in several economies. Central banks are reacting to upward pressure on inflation and adjusting their guidance to markets as regards the future path of asset purchase programmes and interest rates. The FTSE World Government Bond Index returned -0.4% in US dollar unhedged terms in October as short-dated yields in particular moved higher. The USD dollar hedged return on the index was a slightly better -0.2% this month, reflecting a modest strengthening of the US dollar against the Japanese yen.

As mentioned last month, the US Federal Reserve has set the stage to wind down its bond purchases and data showed that headline inflation rose to 5.4% in the year to September. The US Treasury market was flat over the month however, leaving our prospective real yield valuation at a relatively unattractive -1.2%. The Monetary Policy Committee of the Bank of Canada surprised investors this month with a sharply hawkish statement, announcing an end to its quantitative easing programme. Markets had expected a more gradual tapering of purchases. The return on Canadian government bonds was -0.9% this month as yields pushed higher. Valuations in the Canadian market are somewhat more attractive than in the US with real yields close to zero. The Colombian government bond market also posted a negative return in October, -1.6% in local terms. Colombia's central bank raised the policy rate by 0.5% to 2.5%, as the balance of risks to inflation has shifted significantly higher over recent months.

The European Central Bank held a meeting this month where President Lagarde continued to make the case that the currently above target rate of inflation would prove temporary. In her view, the contributions from base effects, supply chain dislocations, and the recent rises in energy prices will fade over 2022, justifying the ECB's expectation that inflation will return below target in the medium term. Euro area government bonds collectively returned -0.7% over the month and the region remains one of the most overvalued markets we monitor. We continue to hold substantial underweight positions in Euro area markets across the Global Bond programme. In Sweden, inflation data released in the past month show prices having risen at a 2.8% annual rate, driven by the increase in electricity prices. Returns on Swedish bonds were -0.1% over the month and the market is relatively expensive with our 10yr real yield valuation at -0.9%.

Elsewhere, house price data released in October showed that Australian house prices continued to increase at a blistering pace over 2021, rising 17.4% to the end of September. Australian bonds generated a poor return of -3.8% this month, as investors contemplated a shift in the Reserve Bank's yield curve control policy. The Indonesian market enjoyed a strong performance however, with returns just shy of 1% over the month. Inflation continues to remain below even the lower end of the central bank's 3-5% target at 1.6%. The central bank has kept rates on hold at 3.5% since February this year. The relatively benign inflation outlook for Indonesia underpins our attractive valuation for the local bond market, with a real yield of 3.5%, and hence our programmes are generally overweight.

The US dollar experienced a mixed performance this month but was generally weaker against other major currencies. The Japanese yen was something of an exception as it weakened by 2.1% bringing it to even more undervalued levels. The best performing major currency over the month was the Australian dollar, appreciating by 4.0% against the US dollar leaving it overvalued in real terms. The Swedish krone also performed well, appreciating by 1.9% over the month, whilst the British pound rallied by 1.7% against the US dollar. Both currencies remain undervalued and are overweight positions in the Global Bond programme.

1. The FTSE World Government Bond Index 100% hedged in New Zealand dollars (NZD), formerly, The Citigroup World Government Bond Index 100% hedged in New Zealand dollars (NZD).

2. Colchester Global Government Bond Fund – Class N ISIN: AU60ETL04677 whose inception date was 02 December 2015. Please see further footnotes on following pages for more details.

3. Annualized returns since inception.

Equity Trustees Limited (ABN 46 004 031 298, AFSL 240975) is the Responsible Entity of the Colchester Global Government Bond Fund (ARSN 168 909 671) (the "Fund"). This document is not intended to be securities or financial product advice and should not be relied upon as such. To obtain a copy of the Fund's PDS please contact Colchester. The PDS should be considered in deciding whether to acquire, or continue to hold, an investment in the Fund. This information is of a general nature only and does not take into account the investment objectives, financial situation or particular needs of any investor and should not be taken as a securities or stock recommendation. These factors should be considered before any investment decision is made in relation to the Fund. The performance of the Fund is not guaranteed. Colchester and Equity Trustees Limited make no representation (express or implied) and shall have no liability in any way arising from the provision of this document for any loss or damage, direct or indirect, arising from the use of this document.

Monthly Report: October 2021

Gross Attribution of Total Returns			
	Portfolio ²	Benchmark ¹	Relative Return
Monthly	-1.13%	-0.16%	-0.97%
Bonds	-0.56%	-0.16%	-0.40%
Currency	-0.57%	0.00%	-0.57%

MONTHLY PERFORMANCE COMMENTARY

The fund returned -1.13% over the month, underperforming the benchmark which returned -0.16%. Bond selection detracted -0.40% from relative returns and currency selection detracted -0.57%. The top three bond detractors from relative returns were the overweight positions in Singapore and South Korea and the underweight position in United Kingdom. The top three currency detractors from relative returns were the overweight positions in Japanese Yen, Mexican Peso and Malaysia Ringgit.

Top 5 Bond Holdings	
1	US Treasury Inflation IX 2.125 15Feb2041
2	Japanese Government 0.3% 20Jun2039
3	Japanese Government 0.1% 20Sep2029
4	US Treasury 2.75 15Feb2024
5	Singapore Government 3.5 1Mar 2027

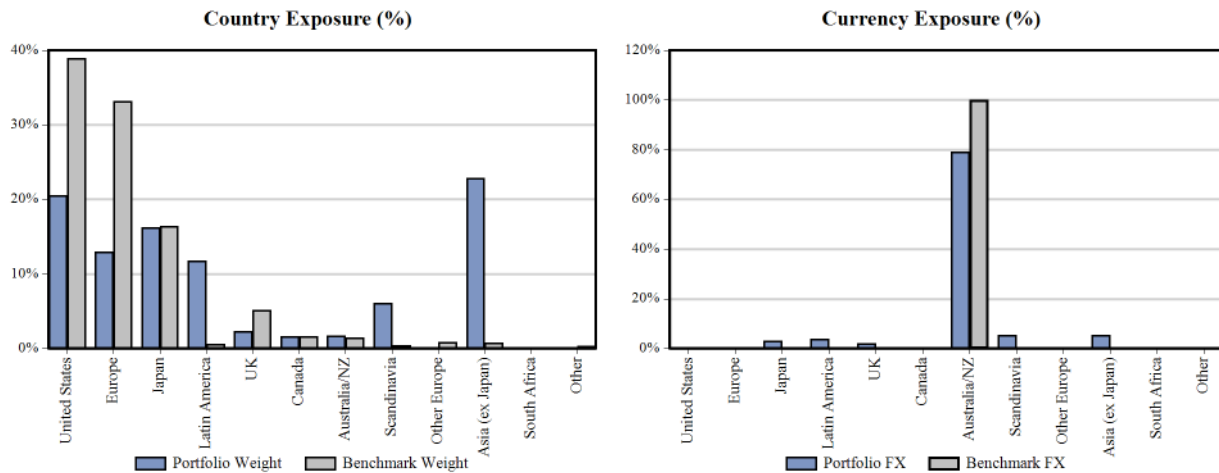
Top Active Currency Positions		
	Portfolio Exposure relative to Benchmark	% of Portfolio
<i>Overweights</i>		
1	Malaysia Ringgit	3.5%
2	Japanese Yen	3.0%
3	Norwegian Krone	2.8%
<i>Underweights</i>		
1	New Zealand Dollars	-20.8%

Portfolio Characteristics		
	Portfolio ²	Benchmark ¹
Modified Duration	6.96	8.67
Flat Yield	2.55	1.56
Yield to Maturity	1.90	0.71
Average Coupon	2.69	1.86
Average Credit Rating	AA-	AA

Equity Trustees Limited (ABN 46 004 031 298, AFSL 240975) is the Responsible Entity of the Colchester Global Government Bond Fund (ARSN 168 909 671) (the "Fund"). This document is not intended to be securities or financial product advice and should not be relied upon as such. To obtain a copy of the Fund's PDS please contact Colchester. The PDS should be considered in deciding whether to acquire, or continue to hold, an investment in the Fund. This information is of a general nature only and does not take into account the investment objectives, financial situation or particular needs of any investor and should not be taken as a securities or stock recommendation. These factors should be considered before any investment decision is made in relation to the Fund. The performance of the Fund is not guaranteed. Colchester and Equity Trustees Limited make no representation (express or implied) and shall have no liability in any way arising from the provision of this document for any loss or damage, direct or indirect, arising from the use of this document.

October 2021

Monthly Report: October 2021

MONTH END POSITIONING

PERFORMANCE SINCE INCEPTION

Portfolio	2015	2016	2017	2018	2019	2020	2021	SI ²³
Gross Returns	-1.50%	4.73%	4.64%	2.82%	7.38%	5.51%	-3.40%	3.34%
Benchmark ¹	-0.22%	5.58%	3.14%	2.66%	6.93%	6.14%	-2.50%	3.62%
Relative Gross	-1.29%	-0.85%	1.50%	0.16%	0.45%	-0.63%	-0.90%	-0.28%

YTD Returns	Q1:21	Q2:21	Q3:21	Oct	YTD
Gross Returns	-3.54%	1.52%	-0.23%	-1.13%	-3.40%
Benchmark ¹	-3.09%	0.78%	-0.02%	-0.16%	-2.50%
Relative Gross	-0.45%	0.73%	-0.21%	-0.97%	-0.90%

Equity Trustees Limited (ABN 46 004 031 298, AFSL 240975) is the Responsible Entity of the Colchester Global Government Bond Fund (ARSN 168 909 671) (the "Fund"). This document is not intended to be securities or financial product advice and should not be relied upon as such. To obtain a copy of the Fund's PDS please contact Colchester. The PDS should be considered in deciding whether to acquire, or continue to hold, an investment in the Fund. This information is of a general nature only and does not take into account the investment objectives, financial situation or particular needs of any investor and should not be taken as a securities or stock recommendation. These factors should be considered before any investment decision is made in relation to the Fund. The performance of the Fund is not guaranteed. Colchester and Equity Trustees Limited make no representation (express or implied) and shall have no liability in any way arising from the provision of this document for any loss or damage, direct or indirect, arising from the use of this document.

October 2021

DISCLAIMERS

- Valuation and returns have been calculated in NZD as at month end. The WM-Reuters exchange rate used by the index provider in compiling their index is the predominant exchange rate used in valuing the Fund.
- Past performance is no guarantee of future performance and the value of any investment may fall as well as rise. This information is provided for indicative purposes only, and is supplied in good faith based on sources which we believe, but do not guarantee, to be accurate or complete as of the date of this document.

Such information is current as of the date of this document and may be subject to change without notice. This document is not to be used or considered as an offer to sell or solicitation of an offer to buy any securities. Nothing in this document should be construed as providing any type of investment, tax or other advice. A full performance presentation in compliance with the Global Investment Performance Standards (GIPS®) is available upon request. Additional information regarding policies and procedures for calculating and reporting returns is also available on request.

- The portfolio was in compliance with applicable investment guidelines throughout October 2021. The portfolio's guidelines are set out in the current prospectus.
- The gross performance record presented above does not reflect the deduction of management and custody fees, which will reduce overall client returns. As an example of the impact of investment management fees on the net return to investors: the value of a NZ\$10 million investment at inception of 02 December 2015 on which the highest 70 basis points was payable, would be worth NZ\$12.146 million gross of investment management fees and NZ\$11.654 million net of fees as at the end of October 2021. The basis for calculating this example is to start with an investment amount, apply the monthly gross performance to the previous computed month end value, and deduct the highest fees payable (70.0 basis points) to compute the new month end value net of fees. Investment management fees are described in the current prospectus.
- Clients may request net performance results at fees agreed in their Investment Management Agreement at any time
- Colchester Global Investors (Singapore) Pte. Ltd. is registered in Singapore, Company Registration No: 201202440M. Registered Office: 6 Battery Road #40-02A, Six Battery Road, Singapore 049909. Colchester Global Investors (Singapore) Pte. Ltd. holds a capital markets services licence in fund management issued by the Monetary Authority of Singapore pursuant to the Securities and Futures Act, Chapter 289 of Singapore. Colchester Global Investors (Singapore) Pte. Ltd. is exempt from the requirement to hold an Australian financial services licence under the Corporations Act 2001 (Cwlth) in respect of financial services provided. Colchester Global Investors (Singapore) Pte. Ltd. is regulated by the Monetary Authority of Singapore under Singaporean laws which differ from Australian laws.
- London Stock Exchange Group plc and its group undertakings (collectively, the "LSE Group"). © LSE Group 2021 . FTSE Russell is a trading name of certain of the LSE Group companies. "FTSE®" is a trade mark of the relevant LSE Group companies and is used by any other LSE Group company under license. "TMX®" is a trade mark of TSX, Inc. and used by the LSE Group under license. All rights in the FTSE Russell indexes or data vest in the relevant LSE Group company which owns the index or the data. Neither LSE Group nor its licensors accept any liability for any errors or omissions in the indexes or data and no party may rely on any indexes or data contained in this communication. No further distribution of data from the LSE Group is permitted without the relevant LSE Group company's express written consent. The LSE Group does not promote, sponsor or endorse the content of this communication.

Equity Trustees Limited (ABN 46 004 031 298, AFSL 240975) is the Responsible Entity of the Colchester Global Government Bond Fund (ARSN 168 909 671) (the "Fund"). This document is not intended to be securities or financial product advice and should not be relied upon as such. To obtain a copy of the Fund's PDS please contact Colchester. The PDS should be considered in deciding whether to acquire, or continue to hold, an investment in the Fund. This information is of a general nature only and does not take into account the investment objectives, financial situation or particular needs of any investor and should not be taken as a securities or stock recommendation. These factors should be considered before any investment decision is made in relation to the Fund. The performance of the Fund is not guaranteed. Colchester and Equity Trustees Limited make no representation (express or implied) and shall have no liability in any way arising from the provision of this document for any loss or damage, direct or indirect, arising from the use of this document.

October 2021